

brume

how to apply made to measure brume window film

For a 2 minute tutorial on how to fit all our window films including custom text visit: www.brume.co.uk/page/how-to-fit-window-film

EASY INSTALLATION - PLEASE READ THOROUGHLY BEFORE STARTING

- Apply the film internally to a flat and smooth surfaced glass.
- The film has a very strong adhesive backing so it is very important that you work in a lint and dust free conditions
- Clean hands are essential
- Window film can be removed after installation but cannot be re-used.
- **DO NOT** work on carpet or wear clothes with loose fibres
- **DO NOT** fit the film in strong sunlight, or very hot or humid conditions.

TOOLS YOU WILL NEED:

- Methylated spirit
- Window Scraper
- Credit card [N.B. Make sure the edges are perfectly smooth]
- Spray bottle containing detergent solution (2-4 drops of Fairy Liquid to 1 pint of cold water)
- **N.B. DO NOT USE ECOVER** as it might cause streaks
- An able assistant
- A pin
- Soft kitchen roll

MADE TO MEASURE WINDOW FILM WITH DECORATIVE CUT-OUTS OR CUSTOM TEXT

1. Thoroughly clean the window. Go over the entire window with the scraper to remove all loose particles, fibres and paint spots, and irregular putty lines, to produce a perfectly clean window with straight edges.

CLEAN GLASS WITH METHYLATED SPIRIT.

Each film is numbered as specified on your order. Check all measurements before starting.

Design cut outs and custom text will be roughly marked in red and covered by a protective carry tape. Using the edge of the credit card with the film face up firmly rub over this carry tape making sure you only rub this tape and not the film. All over designs (such as tiny stars, circles, squares and triangles) do not have carry tape covering them.

2. Spray the window with a generous mist of the detergent solution.

3. Lay the film, face down on a clean dust free flat surface.

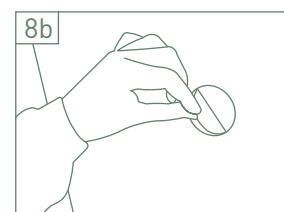
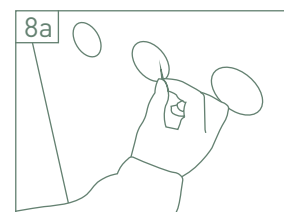
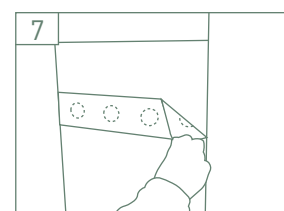
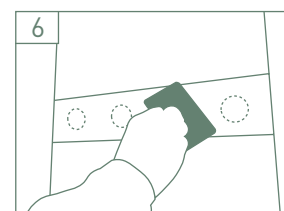
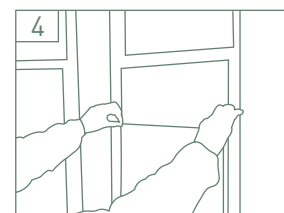
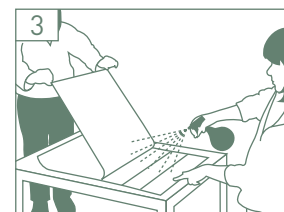
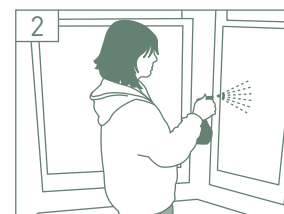
Wet the tips of your fingers with the spray solution. Working with your assistant carefully peel back the backing paper. Spray the sticky surface with the detergent solution making sure there are no dry patches. You can touch the sticky surface when wet, but very sparingly. If the window has dried out, repeat 2.

4. Holding the top two corners of the film with wet fingers and thumbs, carefully offer the sticky side of the film to the window.

5. Manoeuvre the film into position and lightly press in place, the film should slide easily on the glass. (If it doesn't slide, gently peel back the film and re-spray the window).

6. When it is in the correct position, starting from the centre carefully remove the detergent solution and any bubbles by running the credit card over the film. BE GENTLE. Check from the other side that all bubbles are removed. If not, smooth over the film again. Mop up any excess liquid with soft kitchen roll.

7. Leave the film for 3-4 hours, then carefully remove the carry tape. If the film lifts off the window it is not dry enough and you should smooth it back into place and leave for a bit longer. If the carry tape is difficult to remove, spray it with the detergent solution to make it soggy, then it should peel off easily.



8. With a pin, pick out the cut out designs, or text.
Finally run over the film and cut out edges again with the credit card .
Check again on the other side for any air bubbles and smooth out again as necessary.
Any stubborn bubbles can be pierced with a fine pin and gently smoothed over with the credit card.

9. The film should be thoroughly fixed within 24 hours.

COLOUR INSERTS

- I. If your design has colour inserts fit the window film as above and allow to dry.
- II. Wet your finger tips with the detergent solution and then carefully peel off the insert from the backing. Spray the sticky side with the detergent solution.
- III. Position each insert inside the appropriate cut out and manoeuvre into place.
- IV. GENTLY smooth over the insert with the credit card to remove any bubbles and solution. The insert should be thoroughly fixed within 24 hours.

MADE TO MEASURE WINDOW FILM - PLAIN FILM (NO DESIGN CUT OUTS)

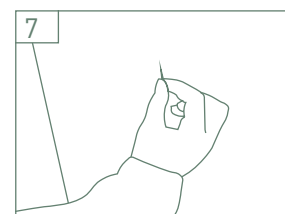
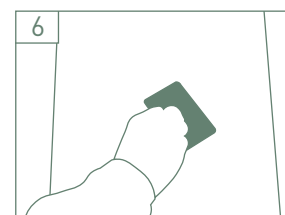
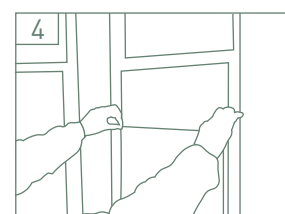
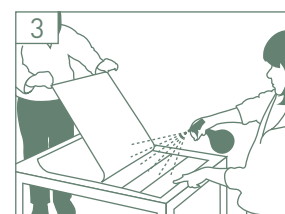
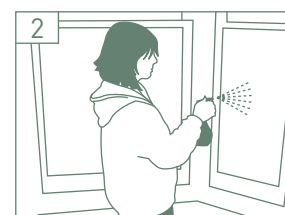
1. Thoroughly clean the window. Go over the entire window with the scraper to remove all loose particles, fibres and paint spots, and irregular putty lines, to produce a perfectly clean window with straight edges. Each film is numbered as specified on your order. Check all measurements before starting.
 2. Spray the window with a generous mist of the detergent solution.
 3. Lay the film, face down on a clean dust free flat surface. Wet the tips of your fingers with the spray solution. Working with your assistant carefully peel back the backing paper. Spray the sticky surface with the detergent solution making sure there are no dry patches . You can touch the sticky surface when wet, but very sparingly. If the window has dried out, repeat 2.
 4. Holding the top two corners of the film with wet finger and thumb, carefully offer the sticky side of the film to the window.
 5. Manoeuvre the film into position and lightly press in place, the film should slide easily on the glass. (If it doesn't slide, gently peel back the film and re-spray the window).
 6. When it is in the correct position, starting from the centre carefully remove the detergent solution and any bubbles by running the credit card over the film. **BE GENTLE**. Check from the other side that all bubbles are removed. If not smooth over the film again.
- Mop up any excess liquid with soft kitchen roll.
7. Check again on the exterior for any air bubbles and smooth out again as necessary. Any stubborn bubbles can be pierced with a fine pin.
 8. The film should be thoroughly fixed within 24 hours.

CARE

Simply clean windows with a damp lint free cloth.
Avoid contact with abrasive cleaning solutions, hard and sharp edges.

REMOVAL

If at a later date you need to remove the film, you will need to soften the glue by gently warming the film with a fan heater, hair dryer or a sponge soaked in warm water. Do not use extreme heat directly onto the glass as it may crack the window pane. Lift off a corner and peel off the film from the shortest edge. Any film or glue left on the glass can be removed with a scraper and WD40 or white spirit.



brume
designs on film